

Mounting holes
3xM3x0.5 6,00 DEEP

$\phi 65,00$

120°

59°

22,32

11,1

12,50

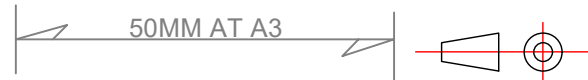
Led color:
 White 2700K (Warm white)
 Medium white 3450K (mix of 2700+4200)
 White 4200K (Cold white)
 Red 625 nm

TITLE: 400-220 Decklight. Warm White, Cold White, Red light. Dimmable, surface mount					
DRAWING NO.: 400-220			DRAWN BY: Thomas		
REV. NO.:	SIZE:	SCALE:	TOLERANCES:	REVIEWED BY:	CREATION DATE:
1	A3	2 : 1	DS/ISO 2768-f		15-11-2021
MATERIAL DESCRIPTION: Alu. EN6082, Acrylic (20 μ) Silver anodized according to EN ISO 7599 (50 μ) Black anodized according to MIL-A 8625F					



Lopolight ApS
 Bakkegaardsvej 513
 DK-3050, Humlebaek
 Denmark
 www.lopolight.com

Tel:(+45) 32 48 50 30
 info@lopolight.com



This Drawing, and the information within, is the property of Lopolight ApS and may not be used in any form without express permission there from. Lopolight reserves the right to change this drawing and assumes no liability for the information communicated herein. Use of dimensions and other information in this drawing is at the users own risk.