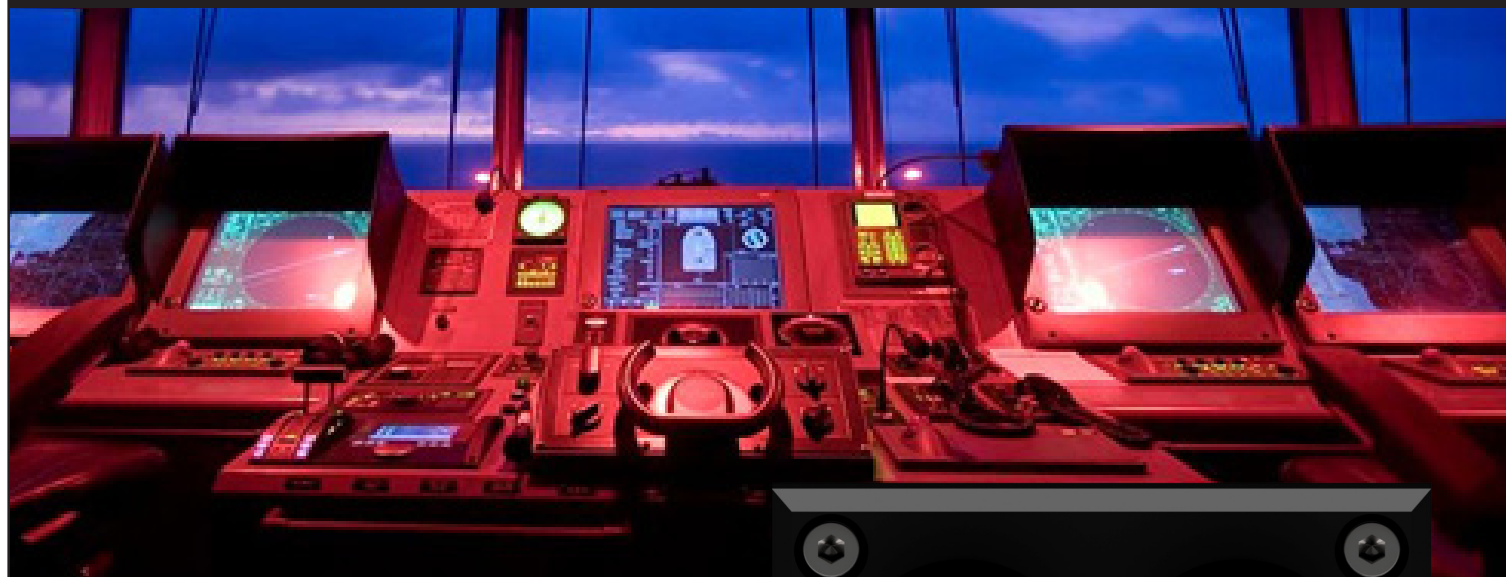


LOPO  
LIGHT



# NEWS

## CONTROL & DIMMING SWITCH



### NEW CONTROL AND DIMMING SWITCH FOR DECK/INTERIOR LIGHTS

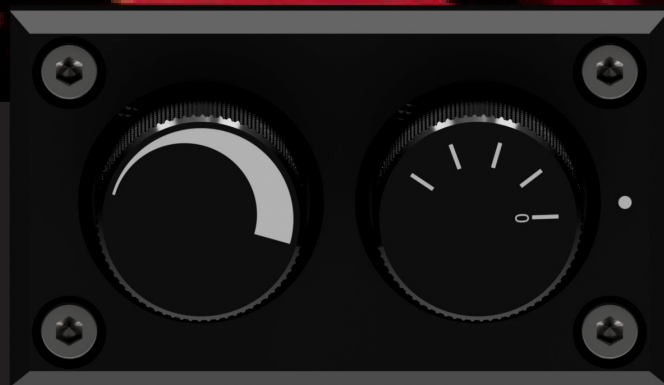
To get the best experience with the 400-22x deck/interior light series you can now get a control and dimming solution for up to 30 lights.

The selection switch enables red light for night use, warm white, medium white and cold white for evening/daytime use.

The dimming function has stepless dimming from 0 to 100%

The compact size and waterproof properties of the control panel (30 x 50mm) allows for installation anywhere.

The power driver is housed in a separate box and can be placed close to the lights and away from the control panel.



# PRODUCT DATA



## Part numbers:

**400-143:** Control panel

**400-144:** Power driver

## Installation considerations:

Control panel is waterproof (IP67) from front.  
The 15/30 light power driver should be placed close to the lights and in a dry place. The unit can be installed in any position and on any surface.

## Power-supply:

Any voltage between 10.0V and 32.0V

## Specifications Power Driver (P/N 400-144):

### Output:

Max 5A per channel (colour).

**Power@12VDC:**  $[5A \times 12VDC = 60W = \sim 15 \text{ pcs}]$

420-22X Lopolight Decklight]

**Power@24VDC:**  $[5A \times 24VDC = 120W = \sim 30 \text{ pcs}]$

420-22X Lopolight Decklight]

**PWM Output (dimming):** Max 2A

**No load consumption:** 25mA

Protected against short-circuit & reverse polarity

## Fusing:

Suggested external fuse: 7,5A slow-blow

## Dimming principle: PWM

## Environmental:

EMC: EN-60945

Waterproof to IP67 (control panel front)

Max ambient temp.: -10 to +50 °C.

Min ambient temp: -20 °C.

Max storage temp: +75 °C.

## Dimensions:

Control Panel: 30 x 50 mm

Power driver (15 & 30 lights):

102 x 89 x 23 mm



**400-144:** 15/30 Power driver

**400-143:** Control panel

