



|||| LOPOLIGHT ||||

THE ULTIMATE NAVIGATION LIGHT SOLUTION

*– the result of an 18 year
voyage and with more
than 200.000 navigation
lights sailing on all vessel
types and sizes*



INDEX:

02

WELCOME

– and why we are here

04

OUR COMMITMENT TO YOU

What you should expect from the
Lopolight Team

05

THE BORING STUFF

Approvals and certifications

06-09

COMMERCIAL VESSELS

Our complete systems for
commercial vessels

10-11

SUPERYACHT

The perfect Super Yacht
navigation light system

12-13

LEISURE YACHTS

The original iconic LED
navigation light

14-17

NAVY & SAR

Proven tailor-made solutions for
all types of Navy & SAR vessels

18-19

NAVIGATION LIGHT CONTROL & MONITORING

Broad range of type
approved solutions

20-21

ICE-CLASS NAVIGATION LIGHTS

With integrated de-icing function
– that you can depend on

22

ATEX LIGHTS

Zone 1 and Zone 2 LED
navigation lights

23

PORTABLE NAVIGATION LIGHT

Rugged, battery powered light system

24

DECK LIGHTS

Compact, versatile and waterproof,
also in the wheelhouse

25

LIGHTS FOR LIFE

A support program to maximize
operational readiness

26

FORM & FUNCTION

Some insights into the
Lopolight design process

27

RESSOURCES

Where you can find more
information on Lopolight

28

SUPPORT FOR YOU

We are experts on LED navigation
light system – ready to assist you



Jan Møller, Managing Director, Partner

Peter Hancke, R&D, Partner

Welcome to the world of Lopolight

This publication is the result of our friends asking for a presentation of the broad faceted and sometimes quite advanced applications of something that is in essence quite simple – a navigation light which has the sole purpose of preventing collisions at sea.

Our vision is to improve safety onboard. By providing functional lighting solutions in exposed and challenged locations. The Lopolight LED navigation light system is a result of this.

Consistent and managed high quality is a necessity for safety products, we are proud to have both the maritime MED module B – the quality part of the 'wheelmark' and recently also ISO 9001

Kind Regards

Lopolight







WE ARE PASSIONATE ABOUT IMPROVING SAFETY AT SEA - ESPECIALLY YOURS!

We see ourselves as more than a manufacturer of lights, we are life-long sailors with combined several hundred thousand nautical miles in our wakes, we are passionate about improving safety at sea - especially yours!

It therefore comes naturally to us to provide free-of-charge advice to create the best light plan for your vessel. If you provide us with a GA drawing, some information where and under which flag it will sail – we will supply you with a light plan.

Our deep knowledge and range of lights will ensure that even the most difficult installations are solved in a elegant and cost-effective manner.



When we are delivering complete nav light systems with lights and a navigation light controller we will set-up and test the complete system together for more than 24 hours. We even offer a commissioning service.

Should you face difficulties with a Lopolight product rest assured that we will take good care of you. We offer a 5-year warranty and even after that has expired we will continue to take good care of you by offering significant discounts for replacements.

The Lights for Life is a program that extends our warranty to – life, including an onboard spare parts package.

FACTS

The team at Lopolight has accumulated more than 200.000 nautical miles under sail.

CERTIFICATION AND APPROVALS

To give you the best assurance of functionality of the essential safety item a navigation light is, several performance standards have been established from authorities around the world.

The most important is the Convention on the International Regulations for Preventing Collisions at Sea, 1972 also known as the COLREGs – here the function of the navigation lights is precisely described. For vessels over 20 meters the MSC 253(83) is an essential supplement as it describes in more detail how the navigation light system must be arranged and controlled.

For European vessels the MED, also known as the Wheelmark, is a mandatory certification, the underlying standard EN14744 is most comprehensive and modern in the world, so many countries choose to accept this.

When you see a product with the Wheelmark mark it implies that there are 2 certificates behind it, a product compliance certificate (Module B), also known as a 'type approval', and a production compliance which means that you have shown the capability and capacity to reliably produce the type approved light, the certificate chosen by professional manufacturers is the Module D.

In the USA the 1988 issued UL1104 standard prevails, a recent guidance from the US Coast Guard (MTN 01-18) has allowed for LED navigation lights to be accepted.

Lopolight holds Wheelmark certificates issued by DNV for all our navigation lights and have successfully tested and shown compliance to UL 1104.

Class Societies are concerned about the navigation light system functionality from the bridge to the lights.

Lopolight holds certification from ABS that demonstrates compliance with MSC 253(83) for both the Lopolight navigation light controller (NLC) and the navigation lights.

CERTIFICATION FOR NAVY

In addition to the civilian regulations the navies around the world are interested in the electromagnetic compatibility (EMC) of the system. The MIL-STD-461F sets the norm over a broader spectrum and allows less noise than the civilian standard IEC 60945.

Regarding radar immunity Lopolight has been successfully tested to endure a radar field of 1500 V/m!

Another central Navy requirement is the ability to endure shock and vibration, Lopolight has been tested to endure 50G of shock and the MIL standard 167 1A for vibration.

CERTIFICATION FOR YACHTS AND SUPERYACHTS

For yachts the esthetics is important and Lopolight delivers, both with the inherent compact size but also the ability to combine lights – whilst retaining the approvals of both.

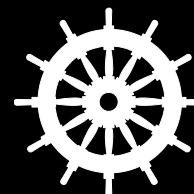
Examples of combined lights are masthead light with anchor light or stern light with anchor.

CERTIFICATION FOR COMMERCIAL VESSELS

The lights and the NLC are certified. Period. You can rely on this.

Should your copy of the certificates be mislaid then you can always find your copy of the declaration of conformity here: www.lopolight.com/download-area#certificatesPDF

Recently we have added ATEX to the certificates at hand.



COMMERCIAL VESSELS

PROFESSIONAL SOLUTIONS

We know that you are dependent on your navigation lights, and we have pulled out all stops to make the ultimate reliable and maintenance free navigation light solution for the professional mariner.

TECHNICALLY FURTHER DEVELOPED PRODUCT

The process started with improving the already rugged Lopolight navigation lights for super yachts and leisure vessels by toughening the outer shell with a hard coat anodizing in black. The professional series includes a IP68 waterproof aluminium base – that allows termination of the ships cable inside the light. We even add various sizes of high-quality cable glands to allow for perfect installation from 19mm (3/4") to 5mm (3/16").

The light installs on a composite (HDPE) base plate, that allows for easy installation and isolates the light from the ship.

CONTROL AND MONITORING SYSTEM

Perhaps the most interesting aspect of the Lopolight Professional Series is that it comes as a system, incorporating our Control and Monitoring. We will also assist with specifying the best solution for you.

Please send us details of the vessel you want to equip or upgrade, and we will reply with a quotation.

WE HAVE SOLUTIONS FOR ALL TYPES OF COMMERCIAL VESSELS

WORK BOATS

Lopolight LED Navigation lights are a perfect fit for work boats, being rugged and robust and will take a knock or an immersion without notice. The lights are smaller in height and diameter making them just perfect for all types of work boats - without compromising performance.

FERRIES

Vibration and 24/7 service are just given factors for most ferries. It is no coincidence that Lopolight is a popular choice with a construction that is vibration proof. We offer a complete solution with all the lights required and a control and monitoring system that can be molded to your exact needs. – up to 50G shock!

CARGO SHIPS

Reliability and low maintenance are key benefits that comes with installing a Lopolight Navigation Light system on board. The system comes pre-configured for integration to VDR and central alarm controls. All special lights such as Suez Canal, Malacca Strait, Panama are available.

**TUGS**

Robust construction, vibration safe and absence of noise on the VHF – that's the feedback tug captains give us when we ask why they have chosen Lopolight.

**HEAVY LIFT CRANE "BALDER"**

With 36 navigation and signal lights together with 2 bridges the "Balder" was a nice challenge for us when they wanted a complete re-fit in 2016.

PUSHERS AND ATB's

The special rules for inland waterways is normal practice for the Lopolight team when advising on what configuration is required. We have many unique ways of making life onboard easier, most recently we introduced remote monitoring and control of the barge lights from the bridge of the tug.

THE LOPOLIGHT PROFESSIONAL NAVIGATION LIGHT SERIES



DESIGNED AND BUILT
FOR YEARS OF USE IN A
ROUGH ENVIRONMENT

A man with dark hair and a light beard, wearing a white short-sleeved shirt and a bright green safety vest, is looking out of a ship's porthole. He is holding a black walkie-talkie in his right hand. The porthole is oval-shaped and set into a dark, metallic frame. The background outside the porthole is a bright, hazy white, suggesting a bright day or a very bright light source. The man's expression is focused and attentive.

TAKING
CARE OF
BUSINESS

...TAKING
CARE OF
YOUR CREW



SAFE WORK – HAPPY CREW

Imagine the relief not to have to climb the mast to change light bulbs, the Lopolight LED Navigation lights are double, so if something should fail, the back-up is always there – and the crew can stay safe.



STAY IN CONTROL

Knowing that your Navigation lights are fully monitored, even for complex installations with ice-class heaters or dimmable SAR/Navy lights, gives the cool feeling of being in control!



LESS TO WORRY ABOUT

There are always many things to do, fish to catch or people to transport, you don't want to worry about not being seen at night. Lopolight has your back!



ONE LESS HOT SPOT

The ATEX certified Lopolights ensures better safety even in areas where flammable gasses are occasionally present

SUPERYACHTS

Elegant design, high quality materials and worldwide approvals
– your yacht deserves nothing less!

EXTREMELY LONG LIFETIME

Lopolight offers a full range of navigation lights dedicated for superyachts of all sizes, resulting in a compact and precise solution in many combinations that allows for elegant installations. Available as both single and double lights for redundancy.

The range is complete with combination lights, such as a masthead with anchor or innovative 180° lights that mounts very discreetly on your mast to form Not Under Command lights or other signal light tasks.

Should you wish to explore the high latitudes, the Lopolight super yacht range also includes ice-class lights with a built-in defroster – while maintaining the small form factor.

SERVICE, END-TO-END

The famous Lopolight service is not only a 5 year warranty but also an offer of assistance for creating the best solution precisely for your yacht.

All our lights are documented in 2D and 3D to give the naval architect the perfect platform to work from, go to the products page, here the drawings will be waiting for you.

You are also invited to share the details of your vessel with us, including special requests for customized installation - and we will revert with a proposal. If you cannot wait for this, we have created a few popular selections for you available below.

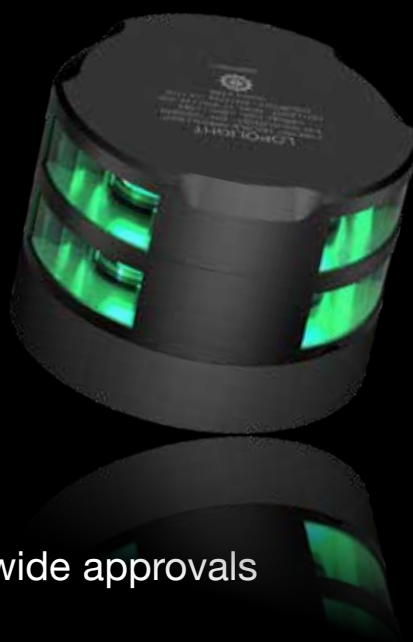
ALL OVER THE WORLD

Navigating the straits and canals of the world requires a number of special lights – the good news is that we have them all ready for you. From hoistable Suez Canal “Christmas-tree lights” and red stern light to dimmable Panama steering light. Even Malacca Strait crossing lights and Kiel Canal green stern lights are available.

Options for interfacing
and integration into the
bridge system

THE PERFECT SUPERYACHT NAVIGATION LIGHT SYSTEM

Navigation light control and monitoring is important. Lopolight offers many options for interfacing and integration into the bridge system – whilst remaining quite compact – and type approved!



MOUNTING
HORIZONTAL



MOUNTING
VERTICAL



Elegant design,
high quality materials
and worldwide approvals
– your yacht deserves
nothing less!



LEISURE YACHTS

Perfect functionality, iconic design and high quality manufacture – just fitting for your yacht.

YACHTS UNDER 20 METERS

This is where Lopolight started out back in 2004, so we have many solutions and neat combinations for this size bracket of boats and yachts. The COLREGs (Convention on the International Regulation for Preventing Collisions at Sea) provides some flexibility in combinations and installations – and we have used them all to get the best solution for your yacht!

But, please, do remember that the COLREGs and national rules for approvals ALSO applies for this size bracket, regardless of what some manufacturers claim – you need type-approved navigation lights, nothing else should be considered for the safety of you and your passengers.

Lopolight offers combined sidelights in various forms, combination steaming light, stern, and anchor to avoid the proverbial 'Christmas Tree' of lights on flybridge power boats.

All our navigation lights are available in silver or black anodized aluminium, with various mounting bases and options. We have put together some packages based on experience, please see below for inspiration – or go direct to the products section.

YACHTS OVER 20 METERS

Lopolight offers a full range of navigation lights dedicated for yachts between 20 and 50 meters, resulting in a compact and precise solution with good value for money. Both as single and double lights for redundancy. Navigation light control and monitoring is important, with many options for interfacing and integration into the bridge system – whilst remaining quite compact.

The range is complete with combination lights, such as a masthead with anchor and with innovative lights such as a masthead with anchor or innovative 180° lights that mounts very discreetly on your mast to form Not Under Command lights or other signal light tasks.

The famous Lopolight service is not only a 5 year warranty but also an offer of assistance to create the best solution precisely for your yacht.





DESIGNED FOR CONTINUOUS USE
IN CHALLENGING ENVIRONMENTS



NAVY AND MILITARY PROJECTS

**WE WILL HANDLE
YOUR PROJECT
WITH CARE FROM
START TO FINISH**



NAVY AND MILITARY PROJECTS

Over the years the Lopolight team has worked with a large number of Navy, Military and SAR projects, each with their own set of requirements and challenges.

Extreme environmental demands, such as immunity to 1500V/m Radar, 50G shock, 65 bar pressure, stealth design or just tamper proof are features that we master. We take the otherwise illegal dimmable navigation light as for granted in this field – but add that we still can monitor it in its dimmed state – even with the ice-class defroster active!

FROM THE BEGINNING

Lopolight has been supplying Navies with rugged navigation lights, starting with very fast small craft for special forces, that were in need for something that can take the extreme vibration and water pressure from high speed close to the water.



All special Navy lights are in our product range, such as Deceptive lighting, IR follow-me lights, Blue Convoy lights, Wake lights, MOB signaling systems, Obstruction lights, Waterline security lights, Perimeter lights plus many unique fittings are available. That our lights are NVIS/NVG is in the DNA of every product.



SPECIAL PROJECTS

Several projects with autonomous vessels allow us to add that we have that in hand. The only military field where we come up short is in the air.

With NATO/OTAN manufacturer registration, strong and surveyed quality management systems and with a good track record of honoring confidentiality and signed NDA's we are ready to accept your challenge.

Today we have proven navigation light solutions for ALL types and sizes of military craft



WARSHIPS

Lopolight offers a complete tried and tested range of Navy lights, both navigation, task and special lights, all with dimming option, whilst maintaining a fully monitored status, with intelligent ice-class option. Rugged compact construction, good for stealth applications. Best in class EMI/EMC. We have a strong reference list.



ARMY TUGS & LANDING CRAFT

The small form factor and extreme ruggedness makes the Lopolight range a perfect fit for smaller vessels in the army and navy contingent. The requirement for ultra-compact control and monitoring equipment is something we master. Having equipped LCVP's, LCU's and even MWT's for multiple countries armies and navies we have all the lights you would need.

AUTONOMOUS VESSELS

With installations on several autonomous Navy vessels around the world Lopolight is at the frontier of this field. The control and monitoring solutions we offer are flexible and can be configured to interface to the onboard systems in several ways such as over a serial communications interface or via Modbus TCP/IP.



PATROL BOATS

We offer complete solutions for the smallest inflatable boat that needs correct and reliable nav lights, even with its own battery pack, all the way up to patrol vessels that have equipment requirement similar to a ship but limited space. The Navies in Sweden, Denmark, Norway, Finland, UK, USA, Singapore and many others are equipping their vessels with the robust Lopolight navigation lights.

COMPLETE LED NAVIGATION LIGHT CONTROL & MONITORING SOLUTIONS

Reliable and precise monitoring of your navigation lights is needed both for safety - and it is required by such as Class, Flag, Maritime authorities

Lopolight offers a broad range of navigation light control and monitoring (NLC) solutions that satisfies the needs of any maritime professional, any vessel of any size.

The system is modular, allowing you to select required modules, while maintaining the safety of the ship and compliance with the relevant rules and standards. For simplicity we have grouped the elements into modules. So you really need only to make 3 choices to get to your solution.



This is the core of the system for controlling and monitoring your navigation lights – with the unique Lopolight monitor relay, one for each light. The system is scalable from 4 up to 60 lights.



FULL SIZE

Required for the Phoenix® power supplies. Each full size system holds up to 28 relays, several systems can be combined up to 60 outputs

COMPACT

Ideal for installations where space is at a premium and power supply is DC. Each compact system holds up to 14 relays, several systems can be combined up to 60 outputs.



CABINET OPTION

The cabinet is an optional IP66 enclosure. Available in 2 sizes.

THE PUSH BUTTON PANEL

The classic robust panel is available in 3 sizes depending on the number of lights to control 14, 21 and 28. Each panel has 4 group functions for single operation of light configurations such as Running, Anchor, R.A.M. and N.U.C. Lights can be paired automatic backup and both light light failure or power failure is constantly monitored with both audible and visible warning. You can pair the lights and any alarms are both visible and audible.

The panel has a RS-232 port that can be used for remote output/input. A NMEA 0183 interface is built-in offering status output for alarm handling systems, VDR and AMS.

More than one panel can be connected to a system allowing easy control for a double bridge installation on vessels such as double ended ferries.

Remote control can easily be established via the Remote Relay Control Module, or if a classic mimic is required the Smart Controller is available.

For Navy and SAR vessels special versions of these panels with nav light dimming function are available. The panels can be waterproofed to IP67. Each panel is engraved to customer specification in language of choice.

THE MIMIC PANEL

The latest addition to our range is the interactive MIMIC panel. As the name indicates it presents a mimic of your vessel and through the touch interface is directly controllable from the screen.

With an unlimited number of light groups, possibility of creating group interactions such as when the anchor lights are activated, the running light will turn off, this mimic panel is extremely versatile.

A comprehensive alarm log is readily accessible for the oncoming watch.

The mimic panel is powered by a compact Linux computer sitting at the NLC core. It works as a local web-server (TCP/IP).

If more than one screen(client) is needed, then you just add a client computer that will connect to the web-server, and provide relevant alarm functions. The mimic panel system is also an excellent choice for autonomous vessels.

The computer (either webserver or dedicated client) connects to the monitor via DP or DVI and USB for touch. Lopolight can supply the monitor or we can connect to an already existing monitor.

Based on a line drawing (side view) of your vessel we will create a mimic, set-up your lights - and the system will be ready to go!

INTERFACING AND INTEGRATION OPTIONS

The webserver driving the MIMIC panel can be integrated in your system in several ways, from the simple fact that the video signal can go directly to your glass bridge screens, controls can happen either from a touchscreen or a keyboard.

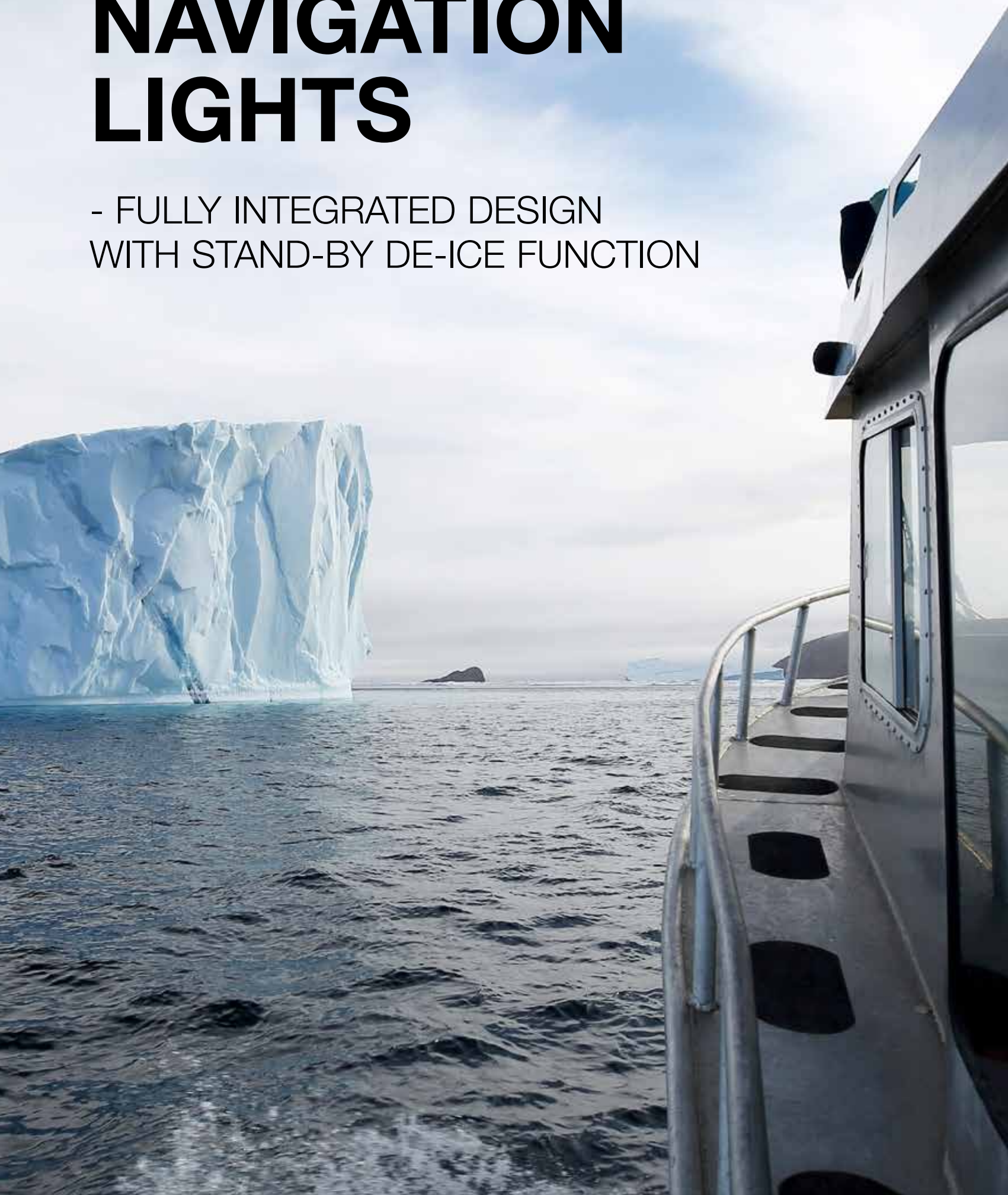
For deeper integration we offer a MODBUS TCP/IP interface, that has been successfully employed on super yachts, work boats and Navy vessels.

FACTS

Over 300 vessels are sailing with control and monitoring systems from Lopolight

ICE-CLASS NAVIGATION LIGHTS

- FULLY INTEGRATED DESIGN
WITH STAND-BY DE-ICE FUNCTION



DE-ICING LED NAVIGATION LIGHTS - THAT YOU CAN DEPEND ON!



The ice-class functionality has been integrated from the early design phase; this gives a number of advantages that you can read about below. The ability to truly monitor the light, that the light can be thawed when in the 'off' position, only needing 1 cable for both light and heating and that we only use a fraction of the energy that our competition needs all comes together in a unique product. Did we say that there is no problem in mixing ice-class lights with regular Lopolight nav lights in a installation?

STAND-BY DE-ICE FUNCTION

Activate the stand-by de-ice function and keep all relevant Lopolight's ready for use in an ice free condition. Even when light is switched off. This exclusive feature installs in the same 2-wire cabling that is powering the light.

FULLY INTEGRATED DESIGN

– plug & play, ABS, DNV & USGC approved

The Ice-class feature has no impact to the weight, size, mounting configuration, IP-rating, electrical connections or approvals of the standard Lopolight Navigation Lights.

All Lopolight ice class lights are available in a dimmable Navy/SAR version.

SEAMLESS INTEGRATION WITH LOPOLIGHT CONTROL & MONITORING SYSTEMS

The built-in logic- and power control allows full and detailed monitoring of the basic navigation light function, also when full de-icing is active. All functions controlled via 2-wire cabling! - all functions controlled via a correctly configured Lopolight NLC system.

NO ADDITIONAL CABLING REQUIRED

– less cost and easier to install or re-fit

Lopolight's low power consumption, combined with the efficient de-ice control, works seamlessly using simple 2-wire cabling. Even dimmable navy installations can be integrated in the same simple cable systems.

LOW POWER CONSUMPTION FOR HEATING

The low profile of the lights in combination with heat conducting aluminium, allows for efficient de-icing at low energy usage. Testing to -60°C / -76°F proves full de-icing ability, even under extreme arctic conditions.



ATEX LIGHTS

LOPOLIGHT PROFESSIONAL EX SERIES LIGHTS

ZONE 1
AND ZONE 2
NAVIGATION
LIGHTS



WHY ATEX NAVIGATION LIGHTS?

The location of the Navigation lights onboard leaves little room for flexibility. It is important that your vessel is displaying the correct lights at the correct position demanded by the COLREGS – this enhances safety at sea by lowering the risk for misunderstandings.

The number of vessels with an ATEX/eex zone is increasing rapidly. Consider the growing fleet of NLG tankers and the associated infrastructure such as tugs, pilot boats and service vessels, or the hundreds of vessels in build now using NLG, Methanol, Ammonia, and others – all with ATEX/eex zones. And then we have all the oil rigs, with their signal lights.

All in need for no-compromise, rugged, fit 'n forget light solution.

ALWAYS SAFE – NOW WE HAVE PROOF

From the first designs 20 years ago – where the electronics of the lights was fully encapsulated in epoxy, power consumption was 1/10 of the comparable incandescent lights, we had a feeling that the product was safe to use in areas where flammable gases could be present. Immediately after receiving our ISO 9001, quality management certification, which is a pre-requisite for any ATEX certification we went to work on getting the Lopolight Professional Series certified for ATEX.

APPROVED FOR BOTH ATEX ZONE 1 AND ZONE 2

The Lopolight Professional EX Series is formally approved for use in ATEX equipment group II, Category 2, Zone 1 (and therefore also Zone 2).

The difference between the mentioned zones can be described like this: Zone 1 is an area that is classified 'as a place in which an explosive atmosphere consisting of a mixture with air or flammable substances in the form of gas, vapours and mists is likely to occur occasionally during normal operation', whereas Zone 2 is an area that is classified 'as a place in which an explosive atmosphere consisting of a mixture with air or flammable substances in the form of gas, vapours and mists is not likely to occur in normal operation but if it does occur, it will be present for a short period of time only'



THE LOPOLIGHT ATEX SOLUTION

The Professional EX Series lights are kept in the exact same form factor as the regular Professional Series, the difference is in the manufacturing; the use of ATEX certified components such as connectors and cable glands. The marking is ATEX specific and there is a grounding strap.

The full range of the Professional Series are available in the EX configuration – including the ice-class lights!

The EX Series lights are fully compatible with the Lopolight Navigation Light Control & Monitoring system.

PORTABLE NAVIGATION LIGHT

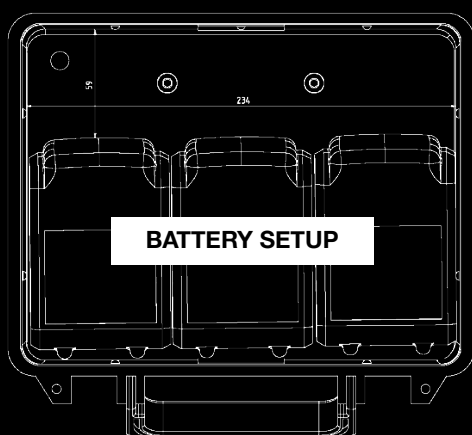
RUGGED, MAGNETIC MOUNTED, BATTERY POWERED.

For use in applications where ships power is not available and navigation lights are required for safety. Such as barges and unmanned vessels.



The unit is powered by 3 Pcs. of standard DeWalt 18/20V batteries allowing a working time of up to 200 hours.

The daylight switch function maximises battery life, increasing the interval between recharging. The battery pack is based on well-known power-tool batteries from DeWalt. (Batteries to be sourced locally.)



The K-lock system enables you to change the navigation light function in seconds. Any standard (circular) Lopolight navigation light can be fitted.

The daylight switch function is calibrated to switch the navigation light on/off at 100/200Lux – as specified by rules and regulations. Typical battery lifetime is 25 days.

The portable navigation light box is designed to “take the beating” presented by the harsh environment in daily heavy-industrial use. Waterproof to IP-67, and will withstand most common mechanical impacts.

The box is equipped with three powerful magnets that will hold the unit in place under most circumstances, reducing the installation time to a few seconds. The magnets are placed in a triangular pattern for optimal hull-contact, and still enabling easy retrieval.



DECK AND WHEELHOUSE LIGHTS

4W COMPACT WATERPROOF UTILITY LIGHTS

The 400-22x is a powerful, dimmable, quad-colour series of lights, enabling selection of the most suitable light colour for a given task.

Colour selection enables red light for night use, warm white, medium white and cold white for evening/day-time use.

The flush mount version only requires 11mm space behind the light. The light fulfills the most demanding requirements for limitation of electrical noise (EMC) and will not disturb any other electronics – including all radio receiving equipment used in maritime environment.

This makes these dimmable 4W lights perfect for illumination of wheelhouse and outdoor areas in harsh environments – IP68 waterproof.



SPREADER AND BOOM LIGHTS

In addition to these fine small lights we have a series of 6W deck, spreader and boom lights, the light is neutral white (4000K) and dimmable – the lights are very compact with a choice of 4 lenses giving a light cone from 6° to 74°

To top the range off - our largest 30W decklight gives an impressive amount of light, same light colour and lens options as the 6W version



LIGHTS FOR LIFE

LOPOLIGHT KEEPS YOU SAILING

A no-nonsense support program to maximize operational readiness of your navigation light system.

Lopolight ensures that all spare parts for your navigation light solution, including installation guides are on board your vessel. The spare parts are replenished automatically as long as the subscription is kept – truly lights for life.



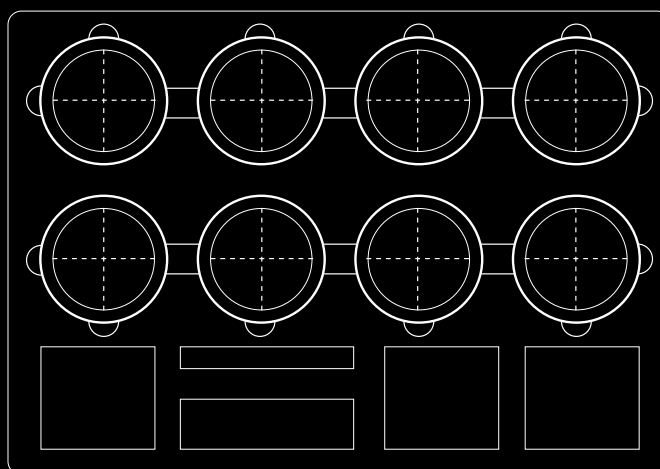
Lopolight will make a high quality yellow pelicase available with spare parts for all lights onboard, and spare parts for the NLC together with a troubleshooting guide and installation instructions. The pelicase will be kept always updated, with Lopolight shipping replenishment items free of charge.



The Lights for Life (L-4-L) program is offered for installations with Lopolight Navigation Lights and Lopolight Navigation Light Controller only.

L-4-L is a Subscription based service; monthly subscription fee based on the system list price. When items from case is used, the crew fills out an online warranty claim form and we will free of charge send a replacement part to the address specified. Subscription minimum length is 36 months, there is no maximum length. Subscription is vessel specific.

A support program to maximize operational readiness and to comply with IMO Resolution MSC.253(83) spare lamp requirement.





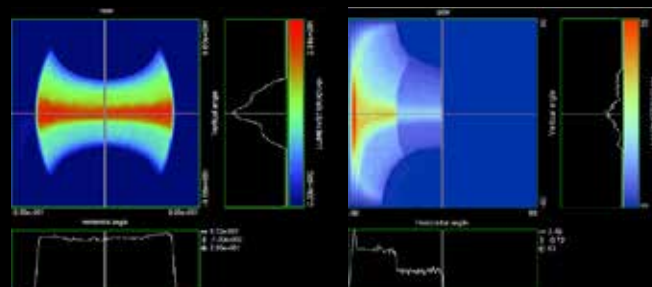
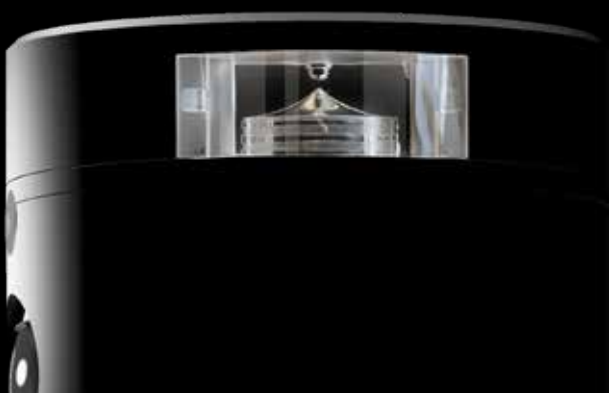
FORM AND FUNCTION

The best navigation lights comes from understanding the challenges of the sea combined with the latest technical innovation.

The Lopolight products are unique based on innovative use Light Emitting Diodes (LED) and very effective and sophisticated power electronics that delivers low power consumption and extremely long lifetime even in the harshest conditions. In addition, all lights are completely sealed to allow submersion. Actually Lopolight has found their way onto several submarines – where the lights are found to work flawlessly after being tested to immersion several hundred meters down.

The design is 100% focused on the challenge of getting the best navigation lights, so there are no considerations to the classic way of constructing a navigation that was established when the primary light source was kerosene, we started with a clean sheet of paper.,

This clean sheet of paper can be said to have been quite salty, as the founders of Lopolight used their decades of sailing experience and thousands of miles on all oceans as platform for the engineering.



MECHANICAL CONSTRUCTION PRINCIPLES

The components we use are the latest generation ultra-robust LEDs, leading suppliers from US and Europe. These LEDs are made to our specifications with regards to intensity and colour, each LED is graded and tested at the factory. The LED is then mated to a lens - that technically speaking is a light guide that ensures the light is guided in the right direction.

The lens material is acrylic (PMMA) as it is the only 100%UV-stable transparent plastic in existence.



WATER AND PRESSURE RESISTANT

The lens sits inside seawater resistant anodized aluminium housing. The housings are CNC machined to exact dimensions. Inside this housing we hide the electronics – more on this later. The whole unit is then potted out with a polyurethane potting compound, leaving absolutely no air inside the light. This has enabled several submarines to be satisfied with standard Lopolight lights. Lopolight can stand being submerged down to 650 meters!

SO MUCH TO TELL!

We, the team at Lopolight, have for years longed for a place to present our solutions, ideas, advice and successes.

Now we have it, please take a moment to find www.lopolight.com and let yourself be immersed in the Lopolight world.

If you are not close to a PC, tablet or your smartphone to experience it up and close, here are some highlights. To deliver more relevance to the user - we have created some focused areas to explore:

Leisure Yachts SuperYachts Commercial Vessels Navy Vessels

There is other subcategories such as Navigation light control and monitoring Ice-class navigation lights

+800 DIFFERENT LOPOLIGHT PRODUCTS.

The real stars of the show are the products! This area is directly linked to our ERP systems and shows a much larger section of our products than we have ever done, at the time of writing it shows 665 different Lopolight products.

FACTS

The Lopolight products have a long life, 10 to 15 years, which contrasts with navigation lights based on incandescent bulb technology, that our customer expect a 5 year life on – and that in the period consumes between 20 and 30 incandescent lightbulbs, where the Lopolight products in contrast have no consumables.



SEARCH AND DOWNLOADS

For most of these products you will be able to see and download the datasheet, drawings in 2D and 3D – and even get a picture.

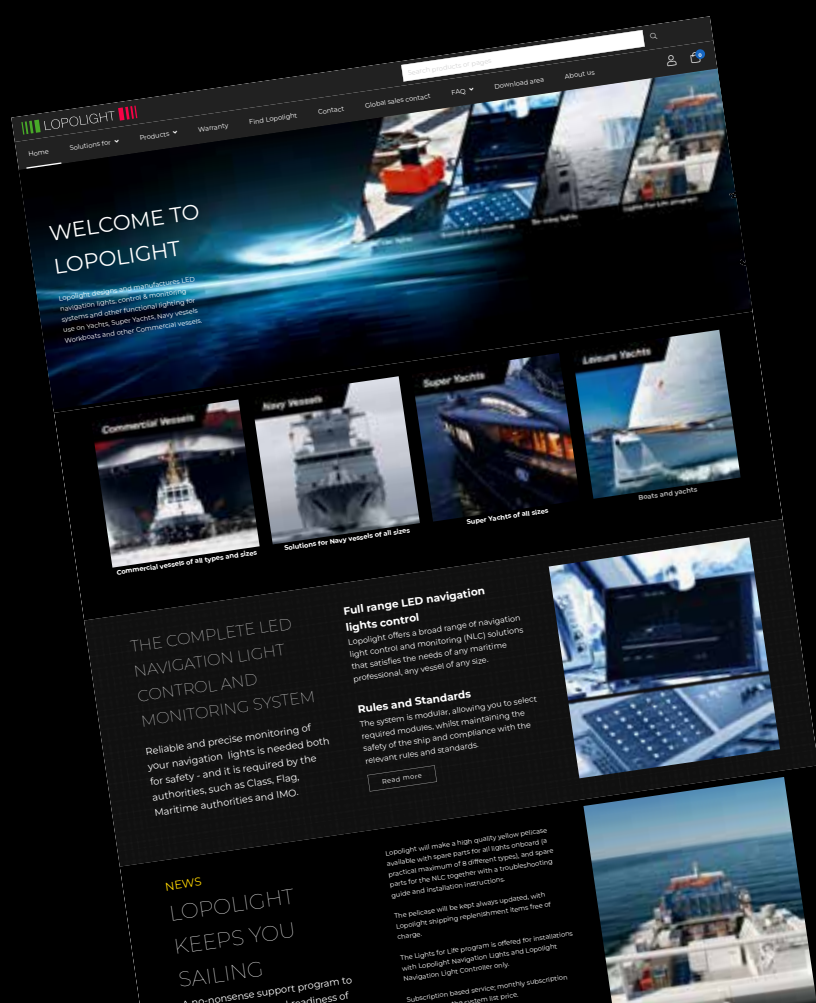
A comprehensive search and selection function should help you find what you are looking for. visible pricing We are showing the list price of many of the products, the special lights and the professional series do not have visible pricing – as that goes against our policy of wanting to add value by creating a light plan as a part of our quotation process.

THE WEBSHOP

The core of the website is actually a web shop, even if you are not logged in and is unable to place an order, you can still create a wish list that easily can be sent to us as a request for quotation.

DISTRIBUTORS

Zoom in on the map and you will find your Lopolight contact or re-seller close to you.





WE DARE TO SAY WE ARE EXPERTS WHEN IT COMES TO NAVIGATION LIGHT SOLUTIONS

One of the benefits of Lopolight focusing only on functional lighting in challenged locations with a strong emphasis on Navigation lights - is that it makes it easy to become an expert.

Our sales and support team sleeps with the COLREGS under their pillows, we really are here to help you solve your lighting challenges

This also means that we will sometimes give advice that is contrary to what you hoped for! But as everything we do is about improving safety at sea, we feel obliged to propose the best solution - not the easiest or the cheapest.



THE LOPOLIGHT SPECIALISTS

Sales managers and technical support team member are regularly receiving formal training in the COLREGs and the associated IMO conventions such as MSC 253(83).

Add to this the local rules that we work with daily, like inland waterways in the USA and in Europe, the Suez Canal and the Panama Canal. Or the Malacca Strait lights, the list is long.

It is mandatory to keep the European 'Wheelmark' to ensure that the whole organization is aware of the important role navigation lights play for safety at sea - and with this comes a strong focus throughout the whole team on producing at the highest quality.

The result is that the whole Lopolight Team are experts in their own right!

YOU AND YOUR PROJECT ARE IMPORTANT TO US

To give you to the best service when you are specifying a navigation light system either for a new vessel or refitting an existing vessel the information we need is:

Vessel size; Type; Flag; Class; Operation area: Inland waterways or offshore.

Will the vessel be transiting Panama; Suez or crossing the Malacca Strait;

We need to know the temperature range the vessel will be operating in - to determine if the lights should have defrosters built in; Finally if there is a need for obstruction lights, fueling lights or other specials.

All this information is found in the vessels GA drawings and the build specifications - so instead of you answering all the above questions, you can send this to us. If you need assurance that we will handle your information confidentially, we have no problem of entering into a NDA with you.

Another alternative to get this service from Lopolight is to use the request form found on our website.



STRONG SALES TEAM

Your first contact with Lopolight is likely with one of our Sales Managers located in key markets around the world, our team of sales representatives in the USA or the strong range of distributors worldwide - rest assured they have all been trained in the COLREGs and the Lopolight product range, and most importantly they know how to use the internal of specialists - to get the very best solution for you!

Find the worldwide contact details on lopolight.com

TRUSTED BY PROFESSIONALS WORLDWIDE

Several hundred vessels have trusted Lopolight to supply complete navigation light systems including the crucial monitoring and control.



NEW YORK TO STATEN ISLAND FERRIES

Chose Lopolight Ice-Class lights for their double ender ferries with dual bridges and tell-tale panels in the engineering rooms



SUPER YACHTS

With compact combination of lights, meeting class requirements and integration to glass bridge systems



WORKBOAT

Self-propelled Heavy lift crane with over 50 navigation lights and 2 bridges



ICE-CLASS PELAGIC TRAWLERS

Working in Arctic waters - de-icing is crucial. Easy management of fishing lights was important to the customer

NAVIGATION CONTROL PANEL

NLC equipment is compact and can be placed away from controls. Easy integration to vessel bridge systems



Lopolight ApS • Bakkegaardsvej 513 • 3050 Humlebaek • Denmark • info@lopolight.com • Tel. +45 3248 5030

www.lopolight.com